

# Cycling in Singapore

Brought to you by GOWES SG-ID

*The largest Indonesian cycling community in  
Singapore*

**March 2022**

**Version**

**4.0**



*Authored and designed by Om / Uncle Akbar*

*With support and inputs from GOWES-SG-ID and SG Cycling community*

# Introduction to cycling on Singapore roads

Welcome to Singapore!

If you are planning to ride your bicycle here in Singapore, you need to be aware of the local road rules and regulation. This is mandatory for you if you want to have a safe and pleasurable ride here in Singapore. So PLEASE take your time to read and understand these road markings and signs, and we hope you have a great time riding here.

## *Disclaimer:*

*Author does not own the graphics in this document. All credit for it goes to the original creator of the graphics. Author created this document for public safety and information, and this document is not meant for commercial use.*

[Content of this document is licensed under Creative Commons Attribution 4.0 International](#)



# Check your gears

There are a couple of items that you need to wear or have on your bike to legally ride on Singapore roads.

These items are:

- Helmet
- Front lights (white color)
- Rear lights (red color)
- If you don't have rear red lights, rear red reflectors are also acceptable

<https://www.decathlon.ie/>



Helmet

Rear reflector



<https://valeryd.com/>



Rear and front lights

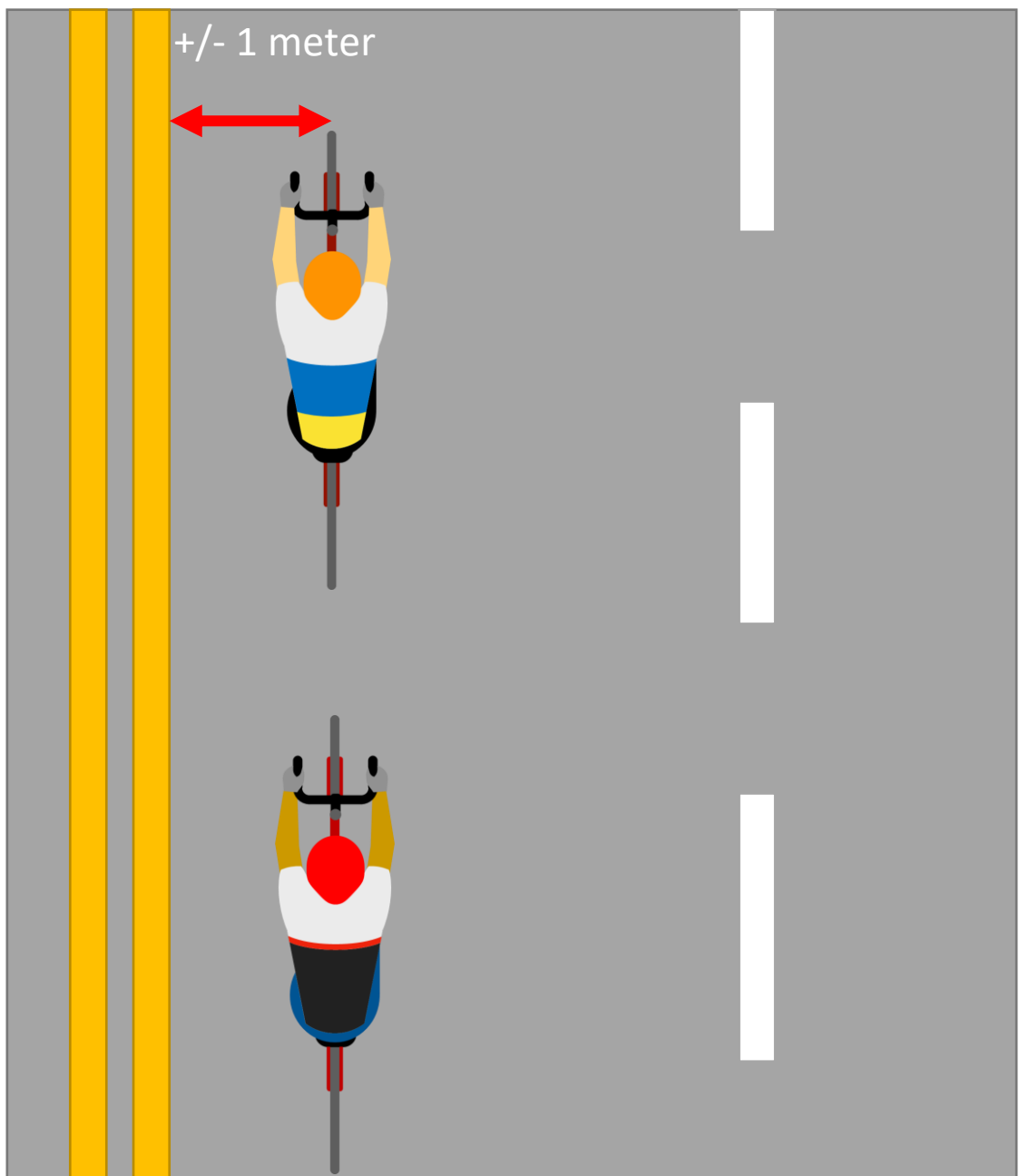
<https://www.topbestprereview.com/wp-content/uploads/2018/02/4-10.jpg>

Make sure that you and your bike are fit for riding.

Also, Singapore roads are mostly well lit and well maintained, but the motorist here sometime are not aware that cyclist are permitted to be on the road.

# Where to safely ride

The best rule to use when you're cycling on the road is to ride about 1 meter away from the road markings on your left. This is to give you space in case you need to avoid potholes, manholes or motorist that are too close.



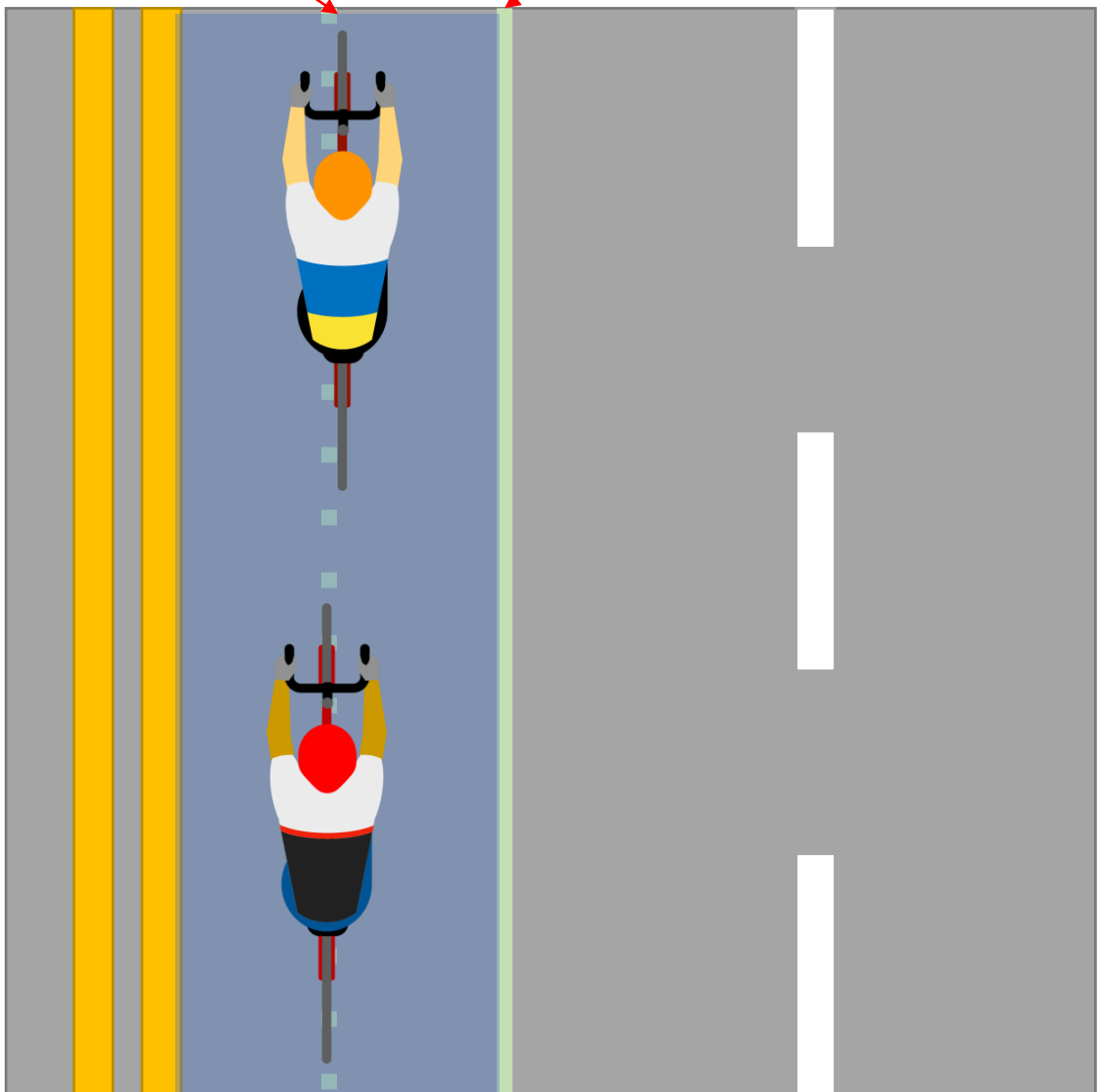
# Where to safely ride

Another method is to imagine your lane to be divided into two. After that, imagine a line that cuts across that new imaginary lane. That's where you want to be riding on. Whatever method you choose, always ride defensively.

Where you should ride

First imaginary half-lane-line

Imaginary blue lane



# Where to safely ride

Different from other motorists, bicycles are allowed ride on bus lanes. **BUT, only ride in single file (not side by side) during bus operating hours.** You can ride two abreast (side by side) during non-operating hours. Below are examples of what a bus lane looks like:



<https://www.straitstimes.com/>



<https://lovecycling.net/>

Normal Bus Lanes



Full-Day Bus Lanes



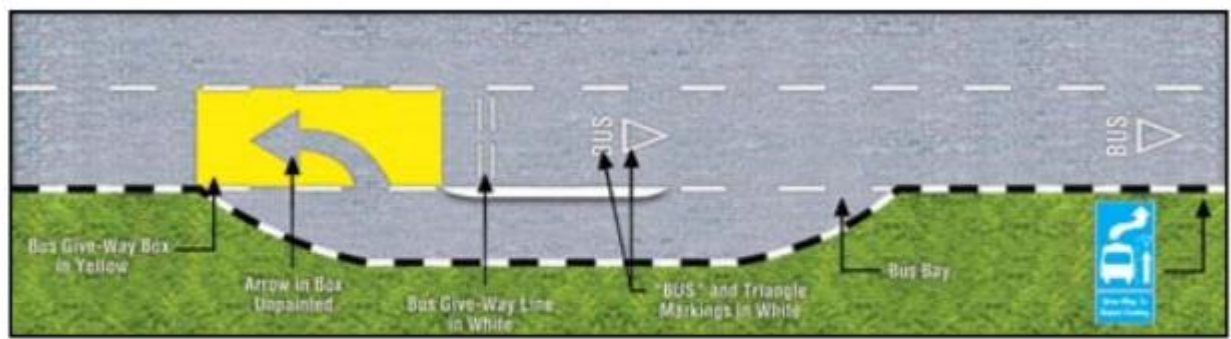
<https://www.motorist.sg/>



# Where to safely ride

## Mandatory Give-Way to Bus sign

<https://www.police.gov.sg>



(c) Mandatory Give-Way to Buses

The section in yellow indicates a mandatory give-way to buses area. Slow down and watch out for buses pulling out of the bus bay. Stop before the give way line and give way to buses exiting the bus bay at the location.



<https://www.researchgate.net/>



<https://commons.wikimedia.org/>

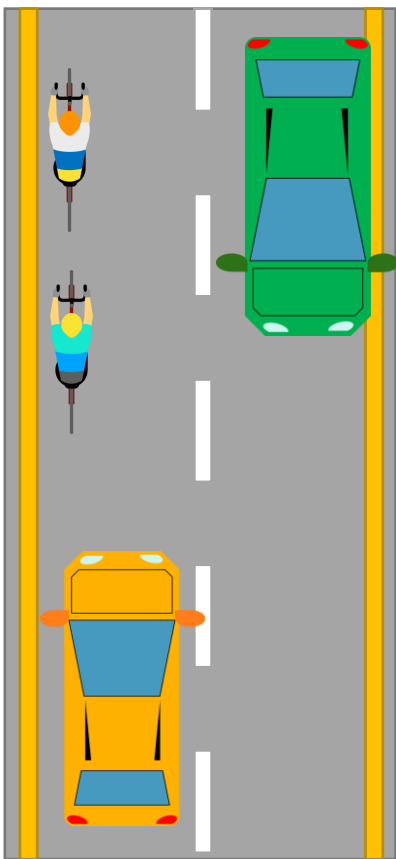


<https://www.todayonline.com/>

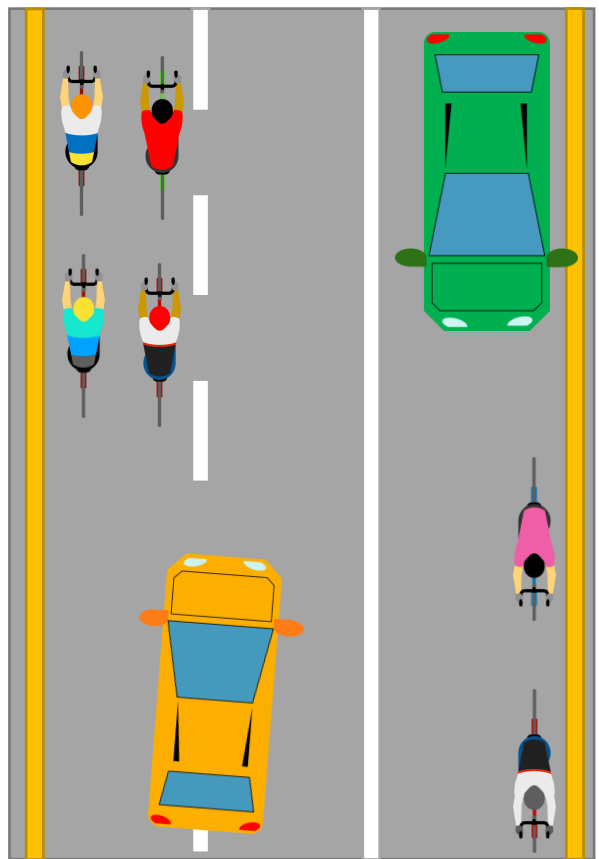
# Where to safely ride

On single lane roads, where each traffic flow have only one lane, you **MUST** ride in a single file. This is to make sure motorist can pass you safely.

Remember to give enough space on your left to be safe.



Both traffic flow is 'single-lane'



This traffic flow is single-lane

This traffic flow is double-lane

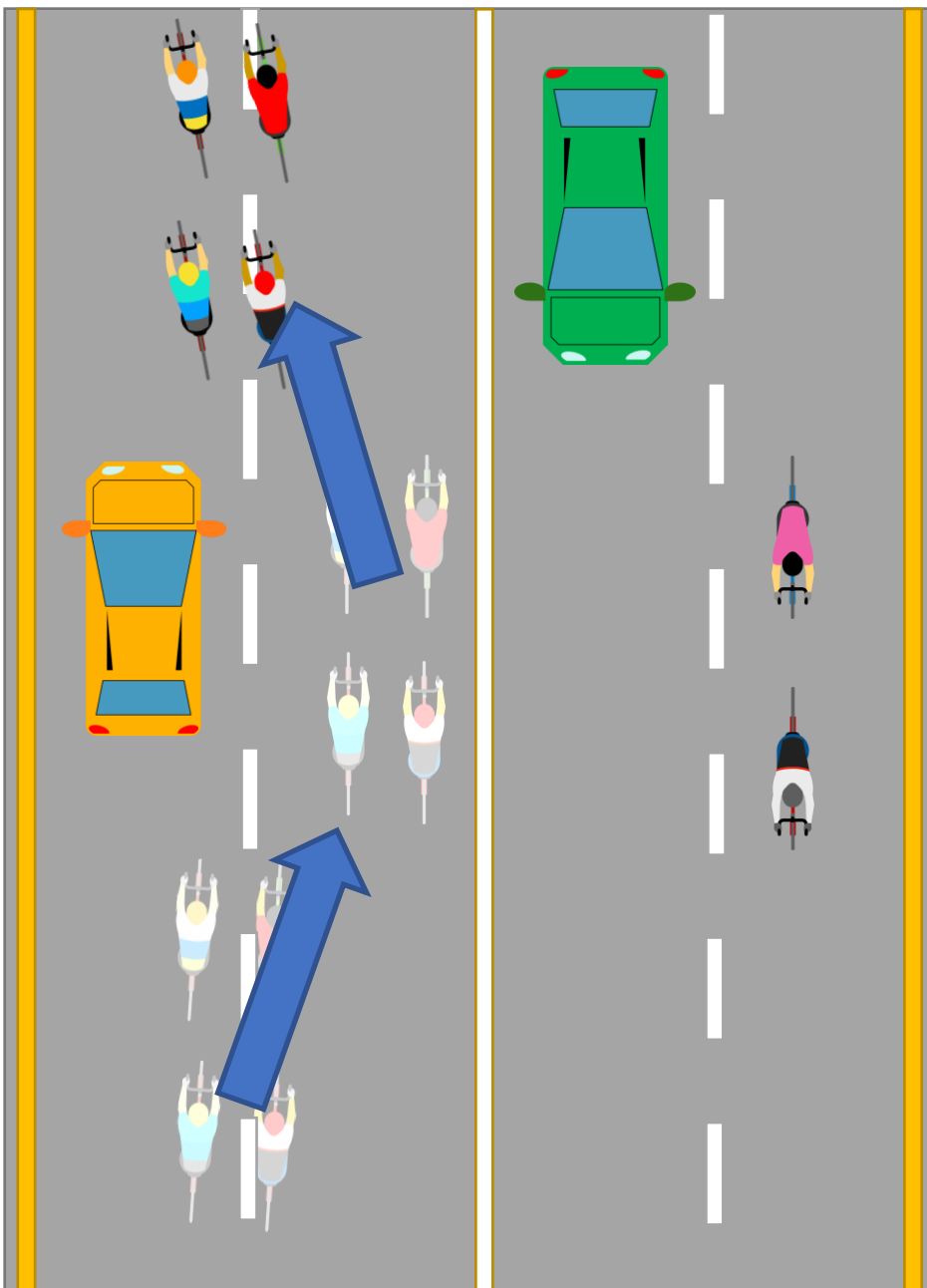


*Quick tip: By default, ride single lane. This is safer for you.*



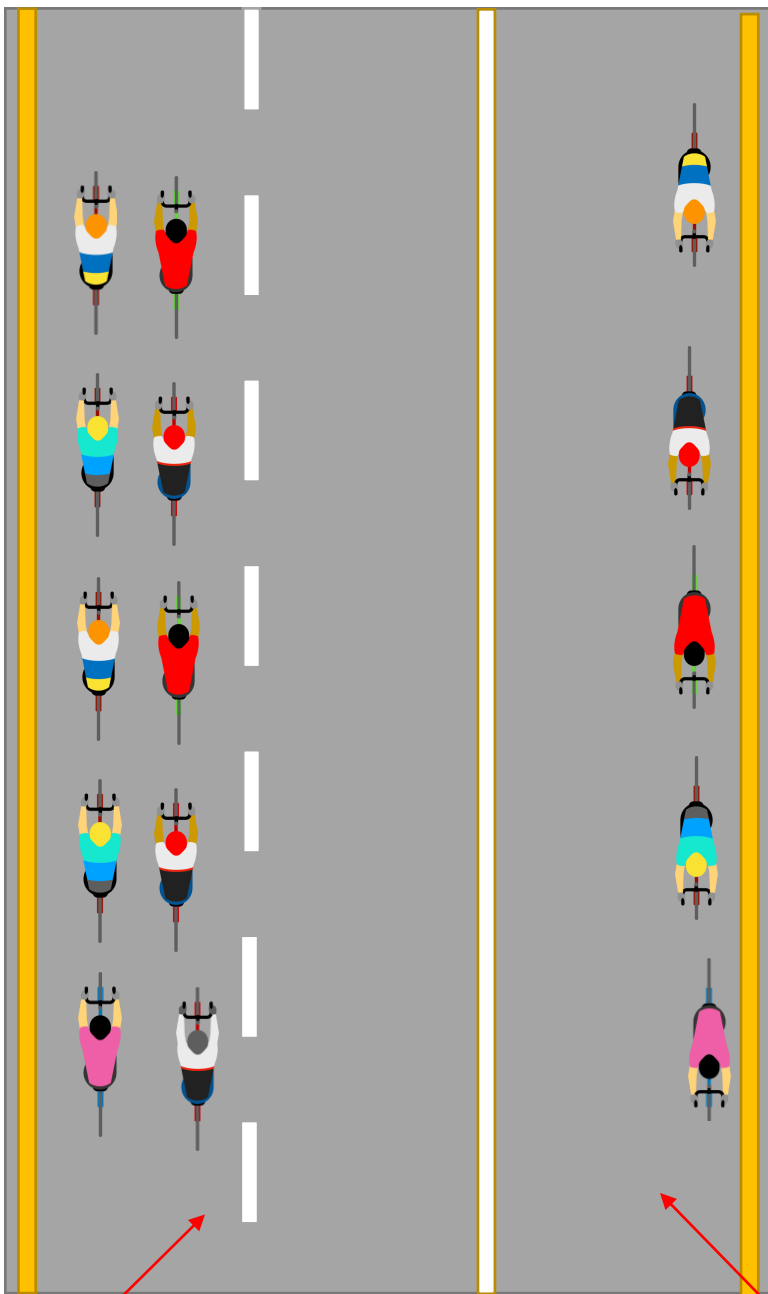
# Overtaking

You are allowed to enter the take the second most-left lane ONLY when overtaking another pack or a vehicle.



# Ride pack size

The maximum allowable number of rider per pack is 10 pax. And the maximum number of row is 5 rows. So if you have 10 pax in your pack you can ride in 5 rows – double files. But once you enter a single-lane road, you need to split the group into 5 rows – single file. You can regroup into 5 rows – double file once you enter a double-lane road again. Between packs there needs to be a distance of 30 meters or distance between two lamp posts.



This traffic flow is double-lane



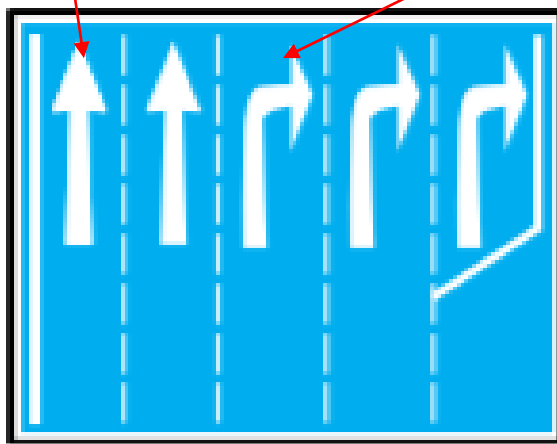
This traffic flow is single-lane

# Always ride on the correct and safest lane

Make sure you are on the correct lane by following the road signs.

Take this lane if you are going straight

Most left lane if you are going right



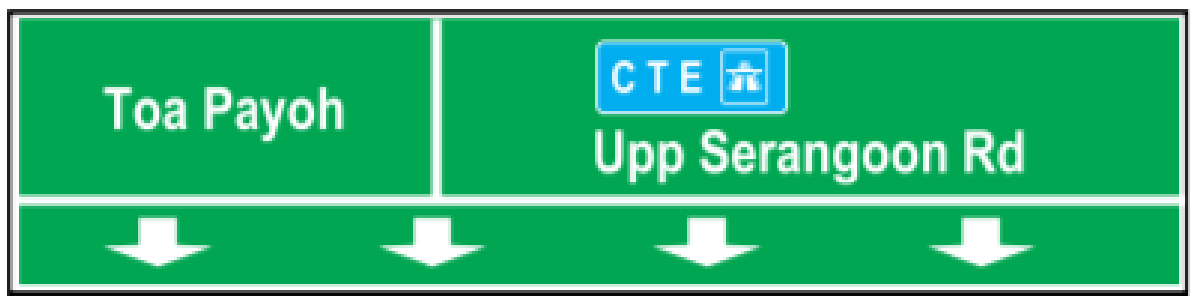
**Three turning lanes ahead**  
(Signal and filter to the correct lane)

<https://www.police.gov.sg>

Sometimes it may seem you are **‘in the middle of the road’** if you take the most left lane of the three right turning lanes. But don’t worry. Just follow the road markings and signs and you’ll be alright.

# Always ride on the correct and safest lane

<https://www.police.gov.sg>



Gantry Sign

A

B

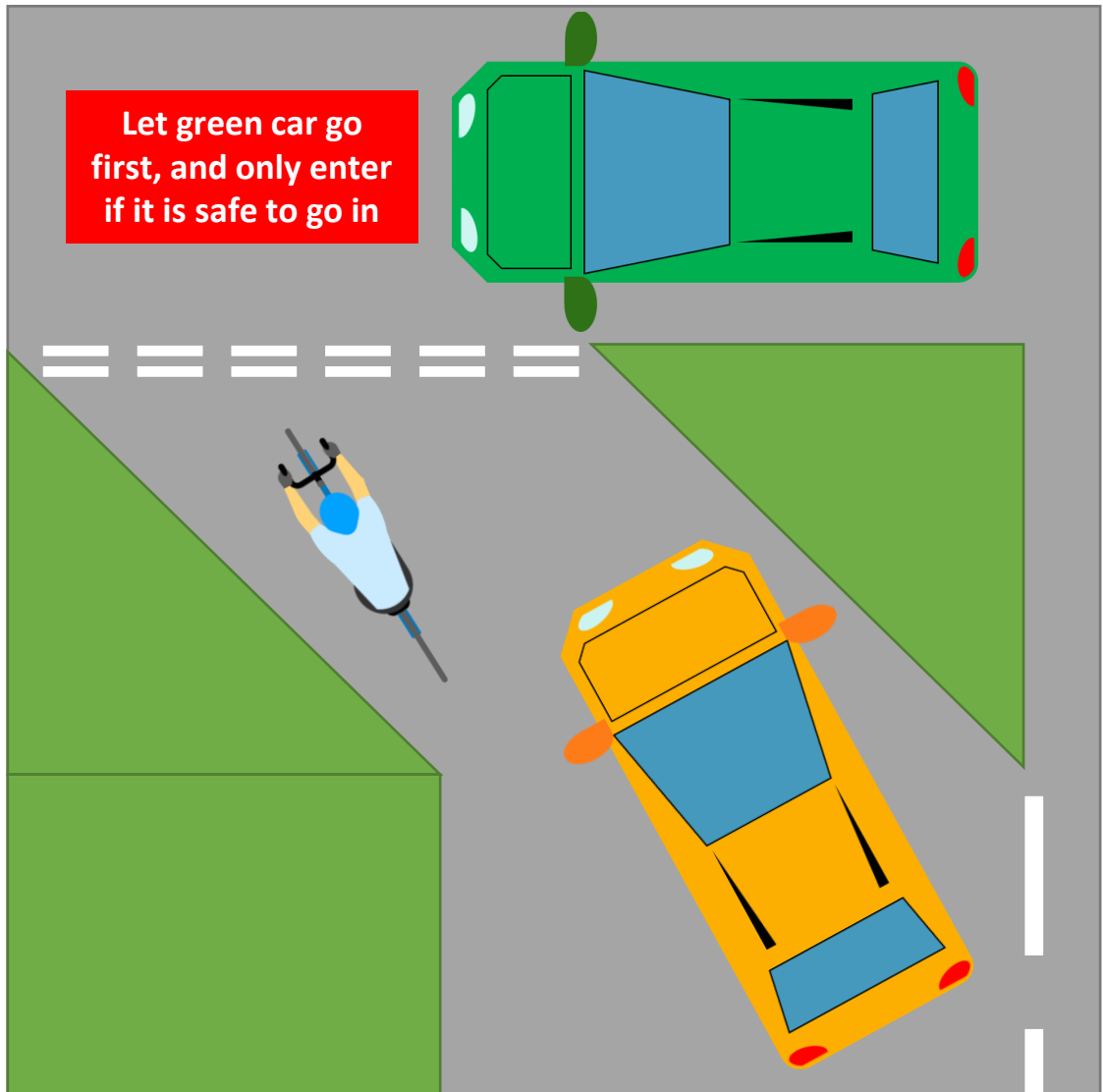
C

D

The safest method of riding is always to follow these signs. This is because you will be following other motorists and the traffic. Even if it is scary, just follow the signs. For example: If you want to go to Toa Payoh, take the most left lane (lane A). And if you want to go to Upp Serangoon Rd, take lane B since it is the most left of the lanes that is going to Upp Serangoon Rd, and be ready to filter to the right because the road ahead will eventually split.

# Navigating through junctions & roundabouts

Junctions and roundabouts are where most accidents happen for motorists, pedestrians and cyclists. Here's what you need to know to navigate through them safely.



## Parallel Broken White Lines

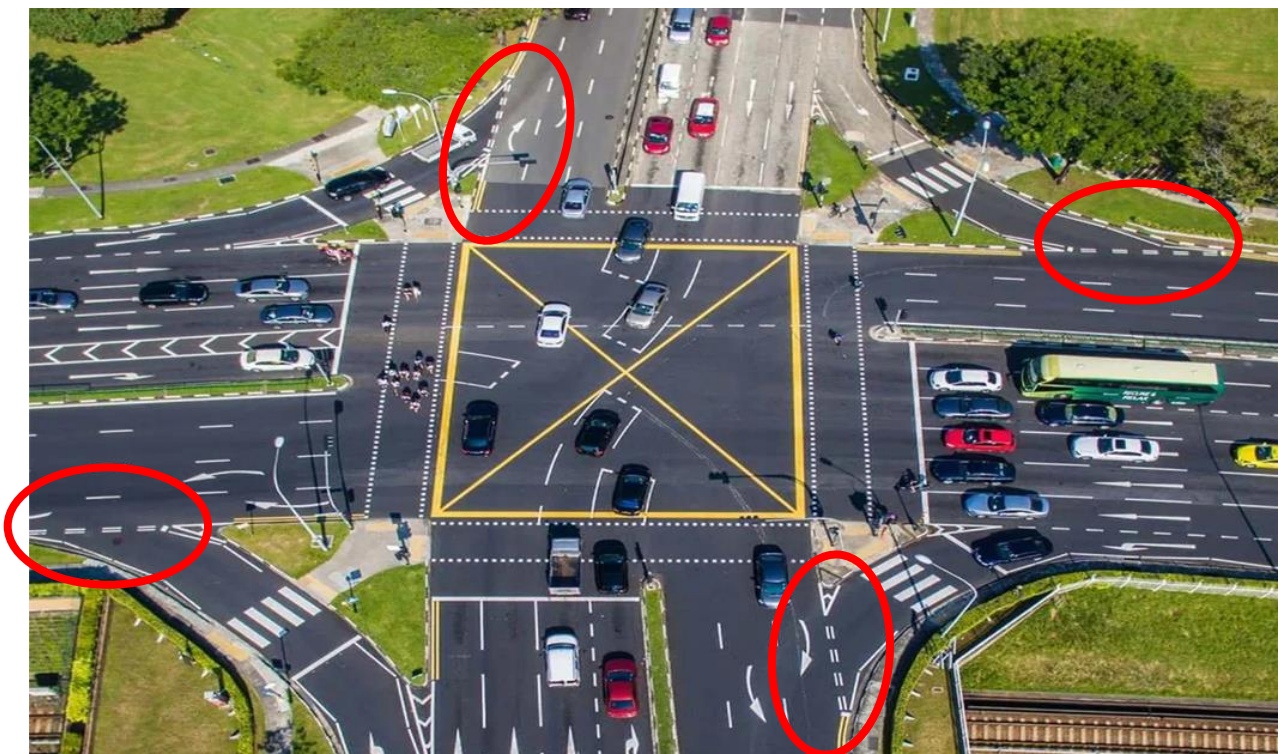
Parallel broken white lines indicate that traffic approaching these lines must give way to traffic on a major road. **REMEMBER: The green car shown above will not slow down for you.** So must make sure the traffic is clear before you enter.

# Navigating through junctions & roundabouts

You will typically find those 'Parallel Broken White Lines' on intersections and roundabouts.



<https://www.businesstimes.com.sg/>



<https://imgur.com/WB4KvPC>



# Navigating through junctions & roundabouts

Always give way to pedestrians on ZEBRA CROSS.

They have the right of way. You stay.



shutterstock.com • 1448744120

They usually have a zebra crossing sign and/or light



<https://www.kindness.sg/>

But some may not have zebra crossing light

<https://www.tripadvisor.com/>

# Navigating through junctions & roundabouts

## Discretionary right turn

When you ride in Singapore you're bound to see one of these traffic signal. If the traffic light is green, but the right turn signal is not lit or not green yet, you should wait. This is because the traffic that is going against your traffic will not slow down or wait for you to make that right turn. So unless you are absolutely sure that it is safe to make that right turn, wait until the traffic light going straight is red, and the right turn in green or lit.



<https://goodyfeed.com/>

Image: Srdjan Randjelovic / Shutterstock.com

Don't turn right,  
usually it's quite  
dangerous. Stay  
and wait for no  
more traffic



<https://www.tnp.sg/>

Go ahead and  
make the right  
turn



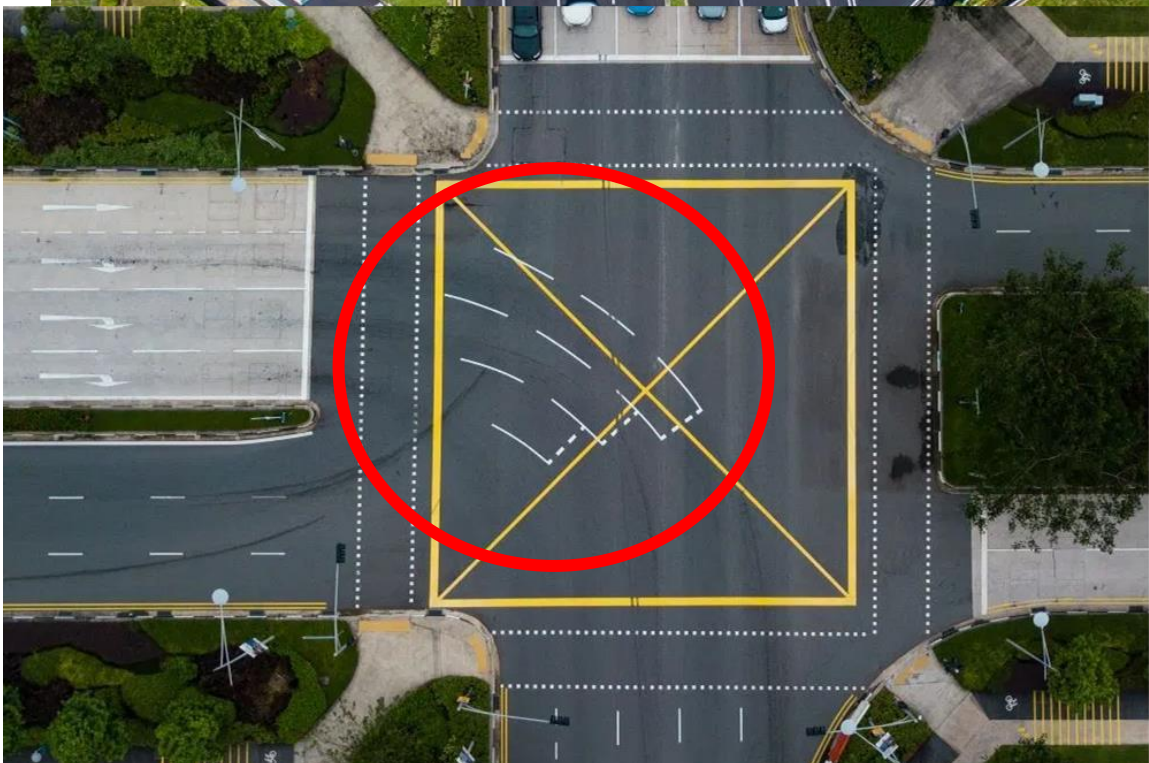
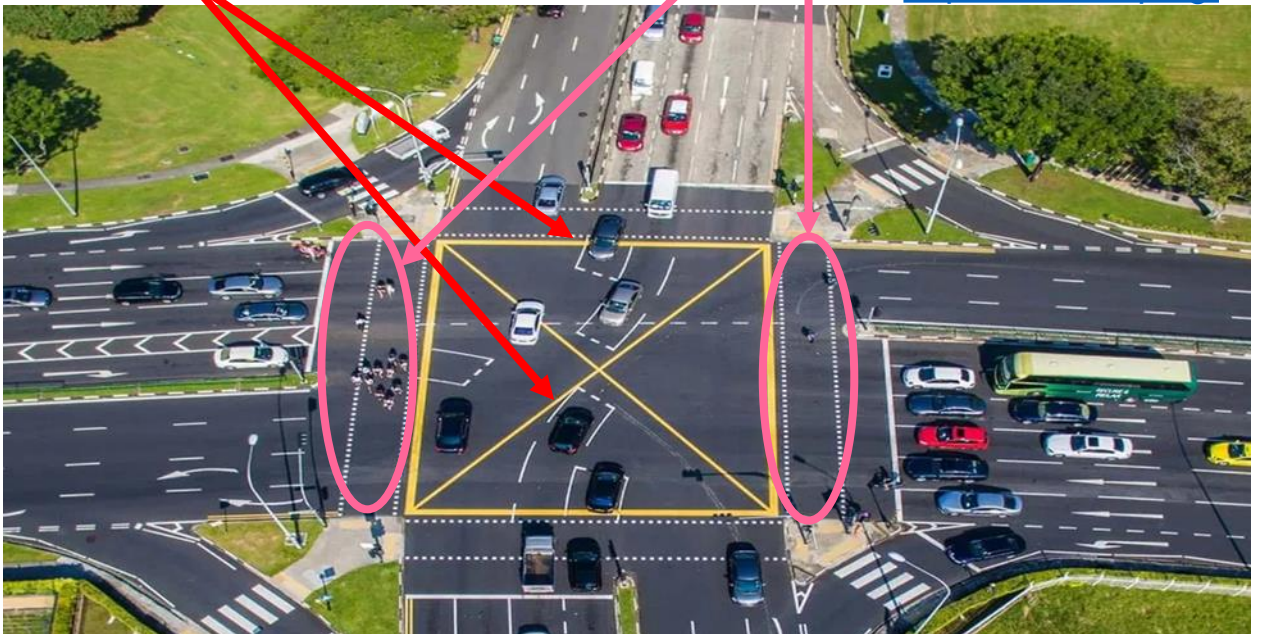
# Navigating through junctions & roundabouts

While waiting for that right turn, you can move forward and wait in the 'Right-turn pocket' if there is one. When you do make that right turn, make sure there are no pedestrians on the 'Pedestrian Crossings'.

Vehicles turning right, stopping at the 'Right-Turn Pocket'

Pedestrians on 'Pedestrian Crossings'

<https://www.tnp.sg/>

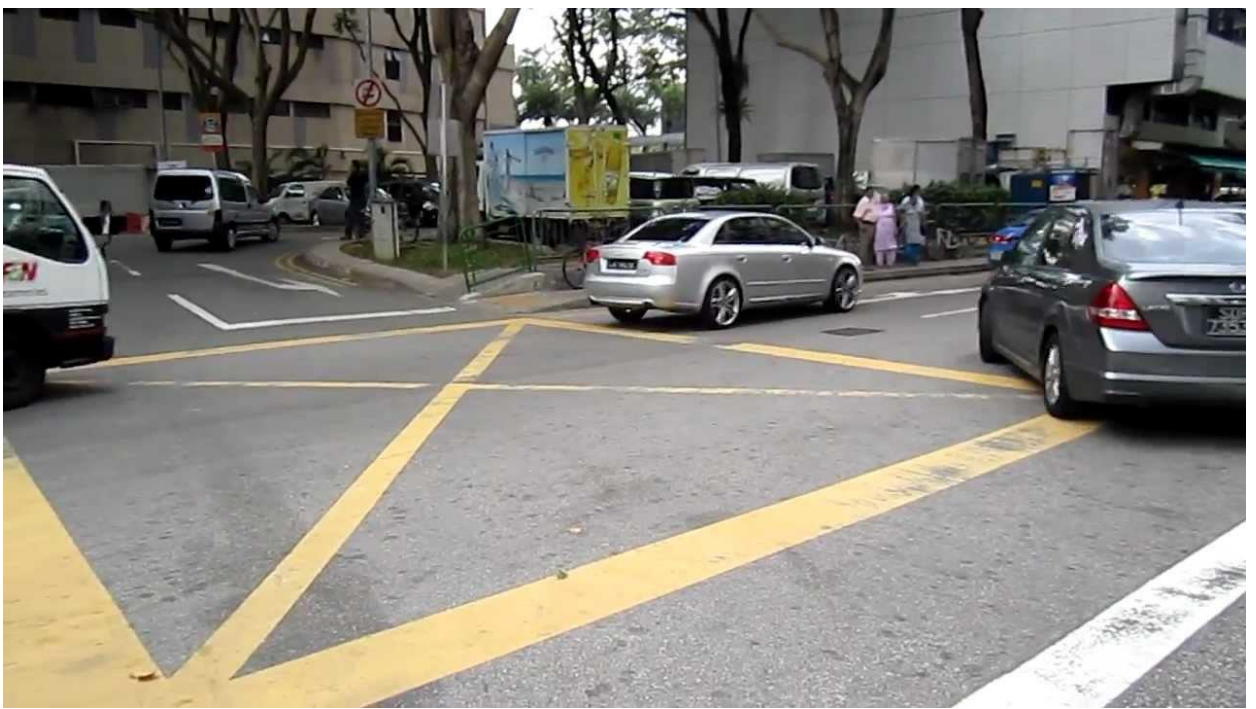


<https://images.unsplash.com/photo-1544198025-491461941e51?ixlib=rb-1.2.1&auto=format&fit=crop&w=750&q=60>



# Navigating through junctions & roundabouts

When you see these yellow box markings on the road, be sure that you keep clear of it when you stop. You are not allowed to stop within this yellow box.



<https://i.ytimg.com/vi/kdrg-Wl8GOk/maxresdefault.jpg>



<https://images.unsplash.com/photo-1544198025-491461941e51?ixlib=rb-1.2.1&auto=format&fit=crop&w=750&q=60>

# Navigating through junctions & roundabouts

## **Too difficult to filter right to make a right turn**

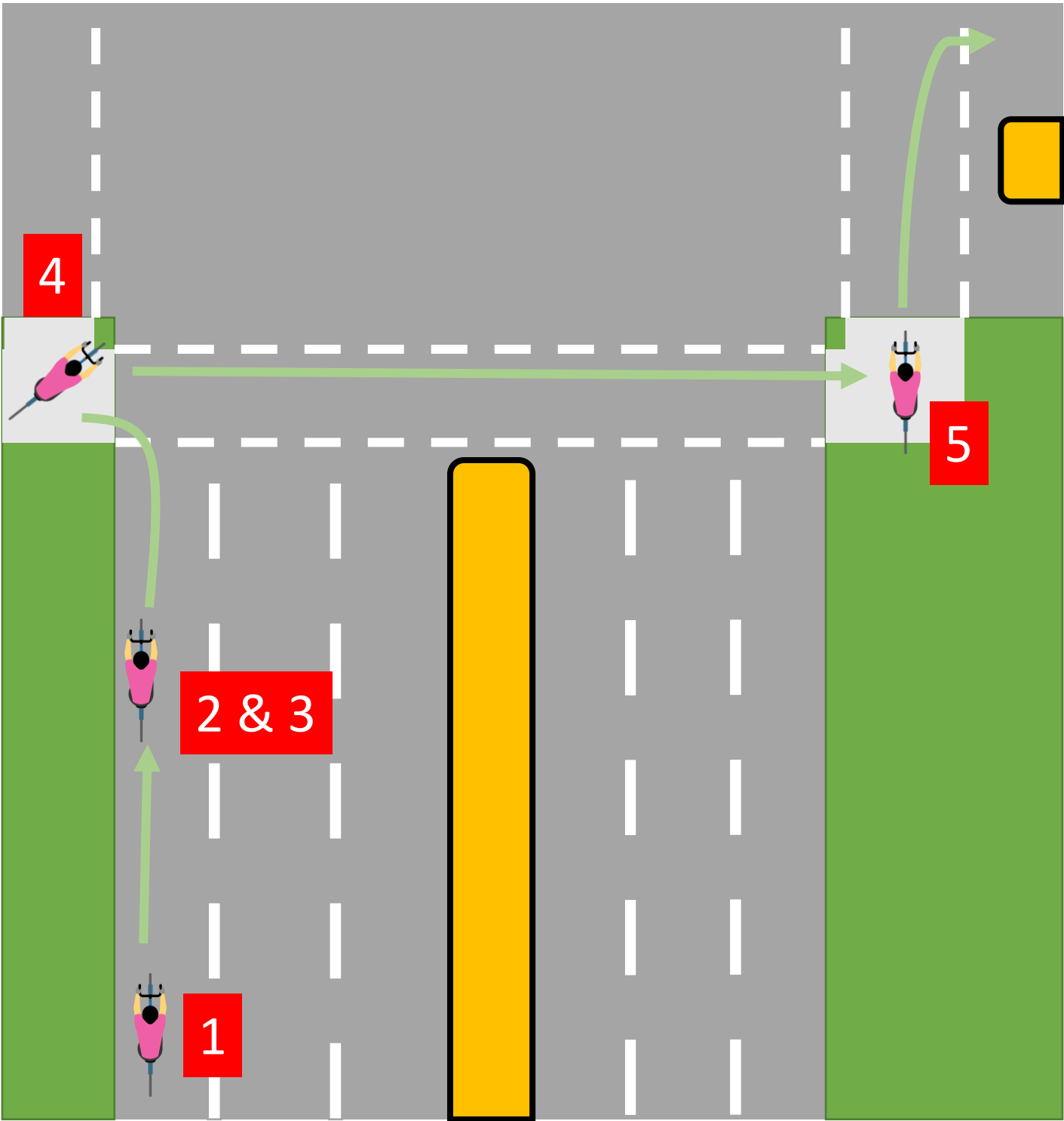
There might be a situation where the traffic is fast and heavy that you just couldn't slowly change lanes to filter to the right to do a right turn at the next junction. In this case, do a hook maneuver.

### **How to do a hook maneuver:**

1. Stay on the left lane when approaching the junction.
2. Signal left and slow down your pace gradually so the traffic behind you can adjust their speed and know you are turning left.
3. Once you reach the junction, enter the pedestrian lane.
4. Wait with the pedestrians to cross the road to your right, and cross the road when the green man lights up.
5. Wait with pedestrian to cross the road again so you can make that final right turn.

# Navigating through junctions & roundabouts

## The Hook Maneuver

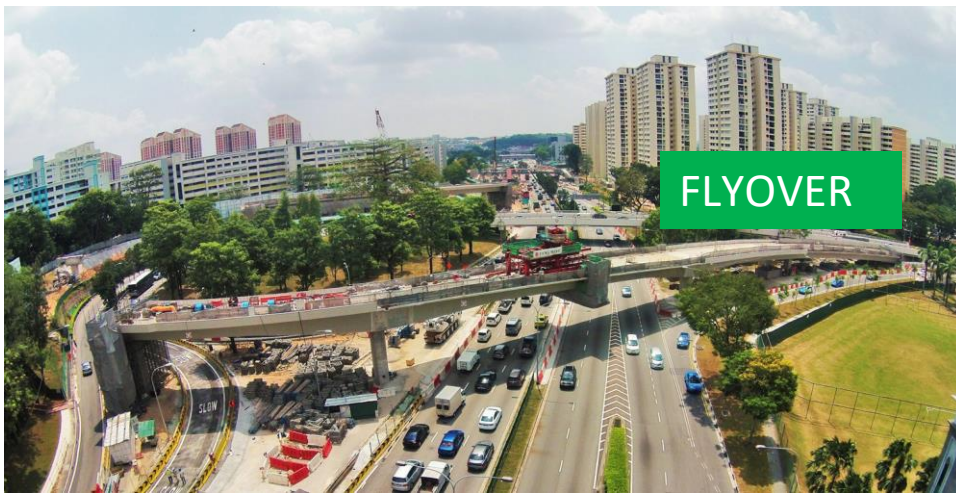


<https://www.vectorstock.com/>



# Tunnels, viaducts, flyover and underpass

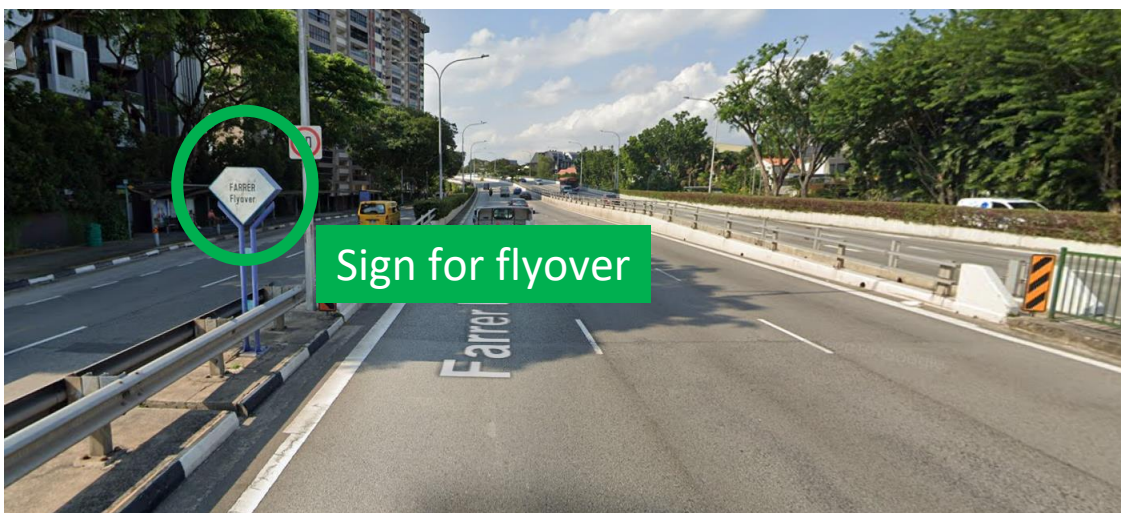
Cyclists are allowed to ride on flyovers and underpasses. But NOT in tunnels.



<https://utracon.com/>



Google Street View



Google Street View



# Tunnels, viaducts, flyover and underpass



<https://www.samwoh.com.sg/>



<https://forums.penny-arcade.com/>



# Tunnels, viaducts, flyover and underpass

Tunnels are prohibited for cyclist, while viaducts are permitted



<https://www.straitstimes.com/>, Desmond Foo



<https://www.istockphoto.com/>



# Expressways

You are NOT permitted to ride on expressways.

There are many expressways in Singapore, usually you can find them easily since all of them have 3 letter signs; like PIE, AYE, KJE, BKE, etc.



<https://www.alamy.com/>

Sign on the road for expressway.  
Avoid entering roads that have this  
sign



<https://commons.wikimedia.org/>

# Expressways

REMEMBERSINGAPORE.ORG



<https://remembersingapore.org/>

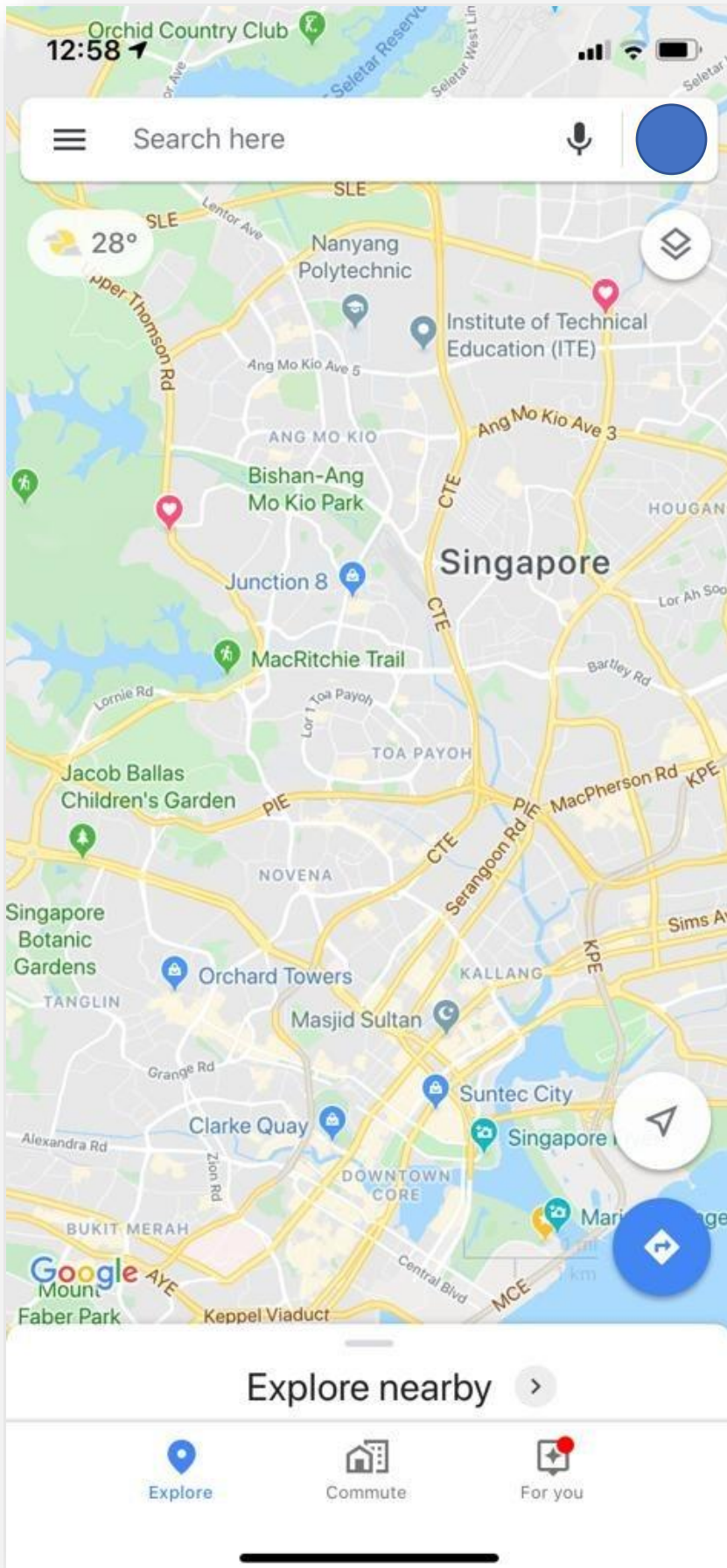
‘A’ and ‘B’ means that if you stay on those lanes you can find Jurong East St 11 and Toh Guan Rd. You can also find the entrance to AYE Expressway heading towards the city

‘C’ and ‘D’ means that if you stay on those lanes you can find West Coast Rd, and also AYE Expressway heading towards Tuas.



# Navigating with Google Maps

Open Google Maps on your phone





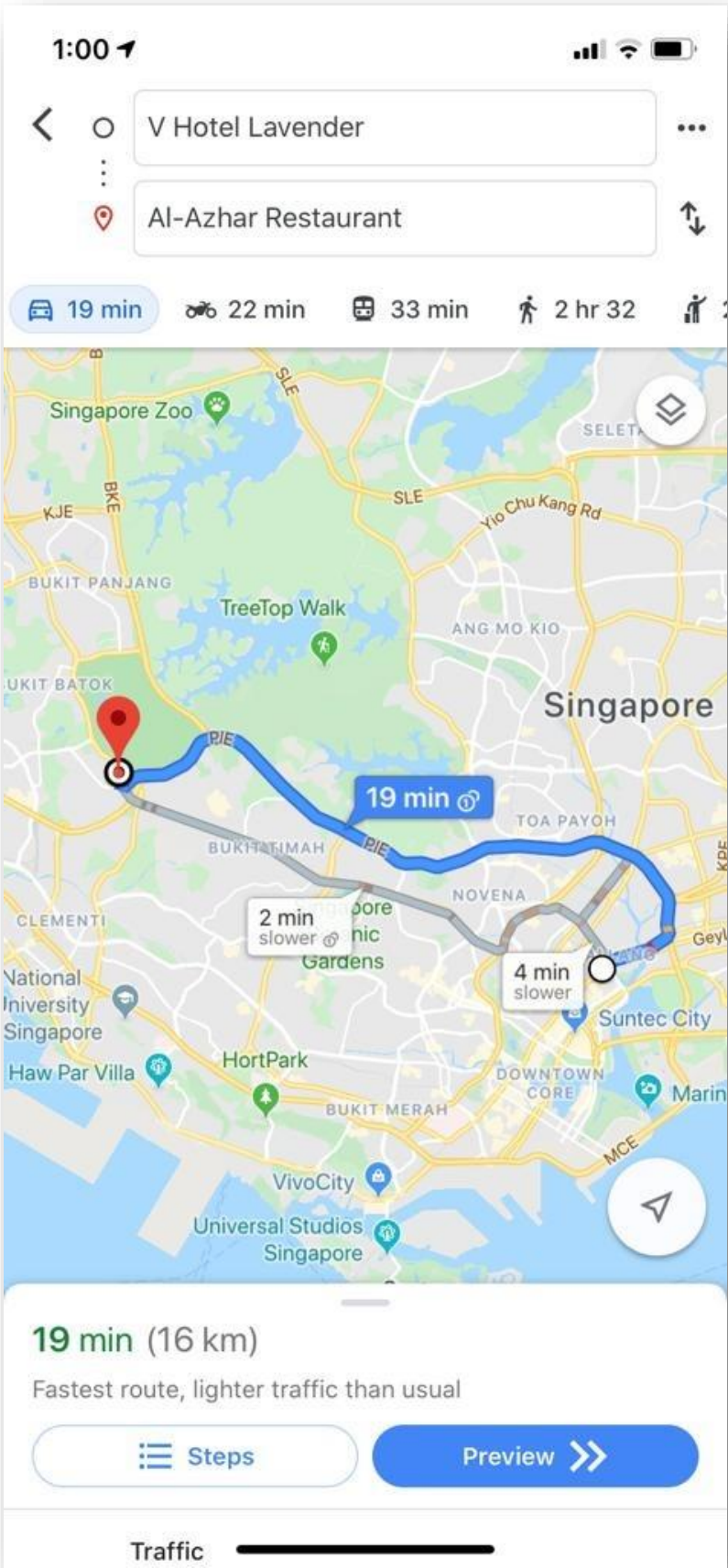
# Navigating with Google Maps

Select the place you want to go to



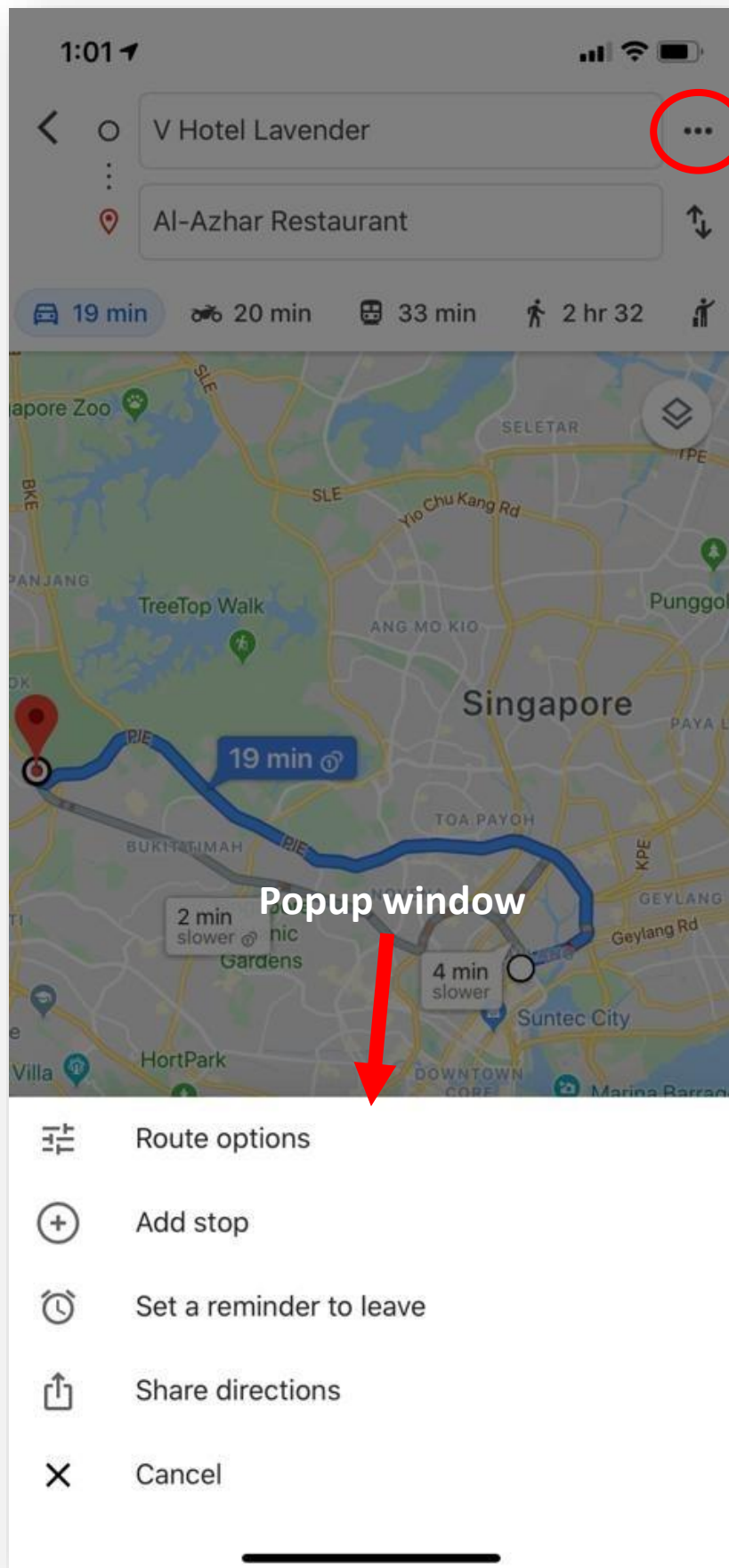
# Navigating with Google Maps

Select 'car' to go there. Notice it will direct you to use the expressway, in this case: PIE Expressway



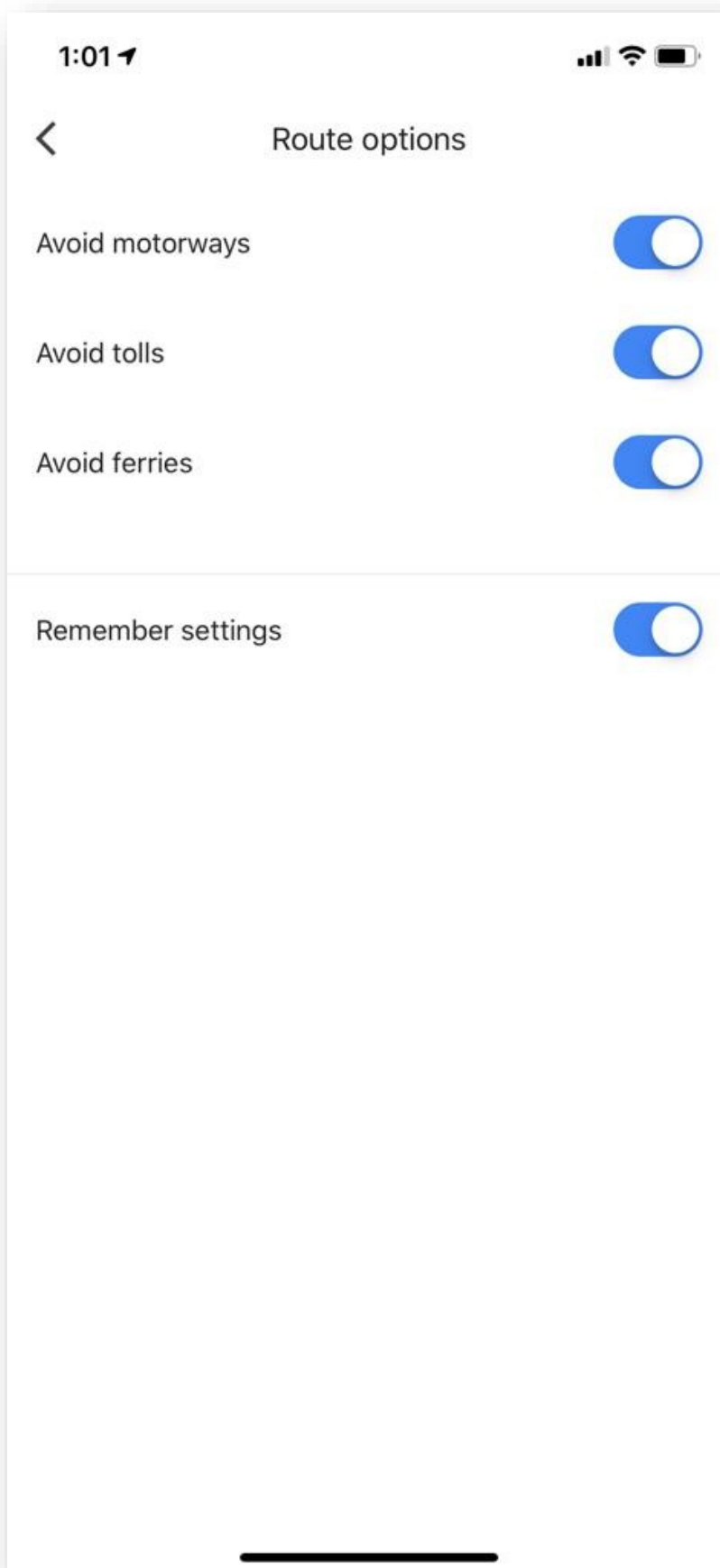
# Navigating with Google Maps

- Click the option button and the popup will appear



# Navigating with Google Maps

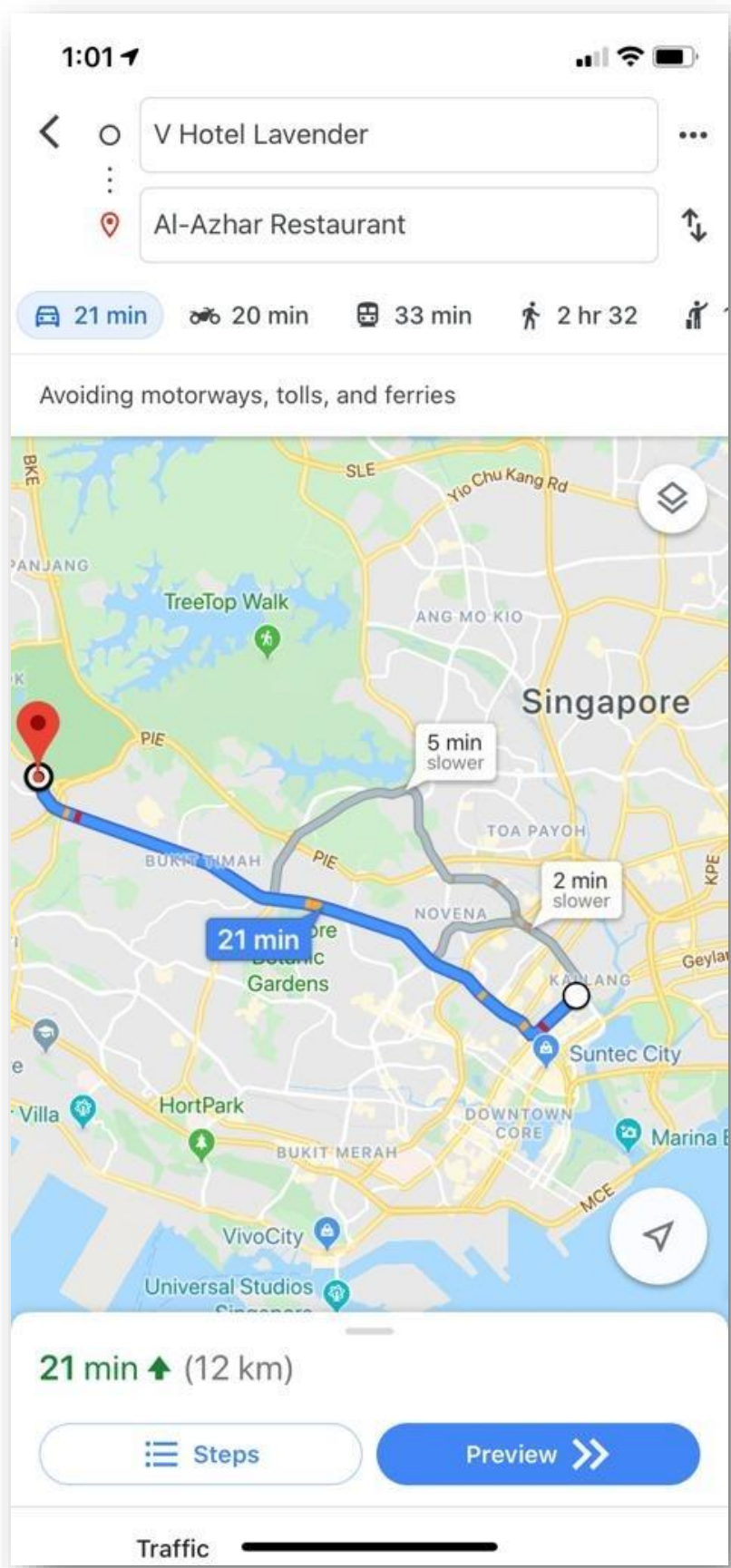
Go to 'Route Options' and activate all three options





# Navigating with Google Maps

Once you go back, you will find that the route will change. Follow this one instead.



# More info

If you'd like to know more about the signs and road marks, you can go to:

<https://www.police.gov.sg/~media/spf/files/tp/online%20learning%20portal/bt%20eng%209th%20edition%20130717.pdf>

If you cant go to the link, please approach any one of our members, they can help you get your hands on this PDF.





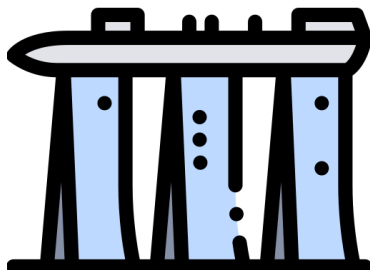
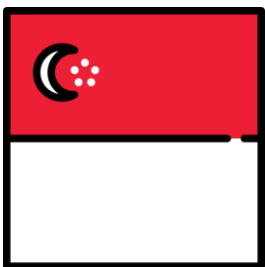
# Closing

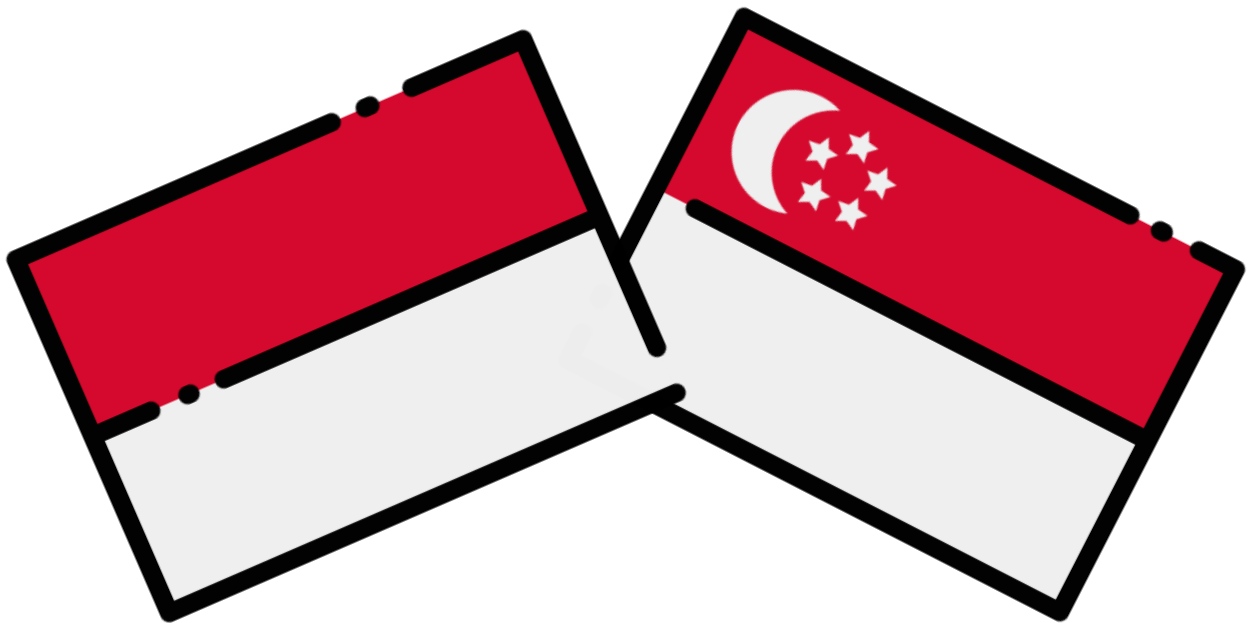
We hope you enjoy your stay in Singapore!

Remember to always follow the traffic rules and signs to be safe, and make sure you have all your gears ready. It is ILLEGAL to not have your basic gears while riding in Singapore (helmet, white front light, red rear light/reflector).

Follow our IG account [@gowessgid](#) for more info on our activities and rides!

RIDE SAFE!





# Riding in a peloton with GOWES-SG-ID

The dos and don'ts on a GSGID group ride

15 January 2020

Version

2.0



# Group rides can be safe

Riding with friends are great! Its fun, you can save energy, and go further. But there are a couple of things that you need to know if you want to have a safe ride with a group of riders. This is an introduction to riding in a peloton with GOWES-SG-ID.

*Disclaimer:*

*Author does not own the graphics in this document. All credit for it goes to the original creator of the graphics. Author created this document for public safety and information, and this document is not meant for commercial use.*

[Content of this document is licensed under Creative Commons Attribution 4.0 International](#)



# Instructions during rides

- **SLOW!**

- If you hear this, repeat it so that the puller can hear.

This word means that the peloton is too fast and so some of the riders are falling / beginning to fall behind

- **LIGHTS!**

- This means that the group is stopping due to traffic light. Get ready to stop and stay in your lane. Stay in formation.

- **ROLLING!**

- The group leader is signaling to start moving again, get ready to pedal and move with the group.

- **OUT!**

- This means that there are obstacles up front, usually a car stopping, a bus stopping, or other riders that we're overtaking.

- **CLEAR!**

- If you hear this, that means that it is safe to move to the next lane on your right. Usually this is after 'OUT!', once the sweeper say it's okay to switch lanes.





# Instructions during rides

- **SINGLE FILE!**

- If you hear this, get ready to make way for other riders to filter in to your lane. The group will be riding in one line usually because its dangerous to ride two abreast.

- **HOLE!**

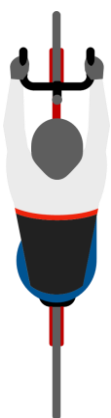
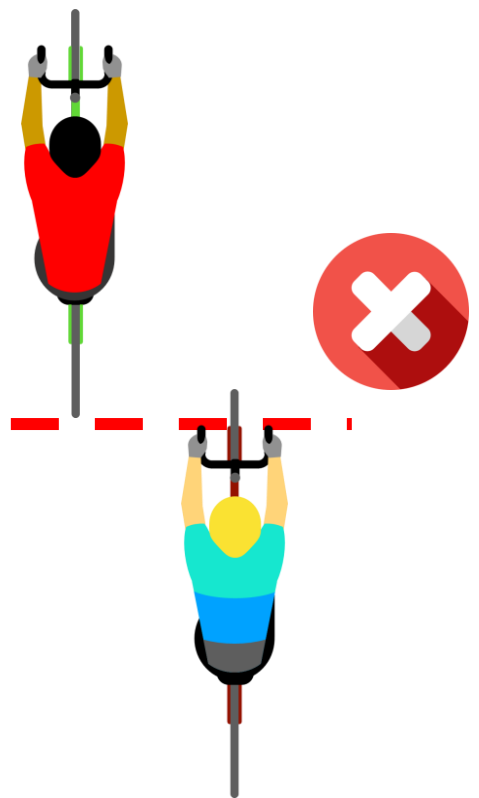
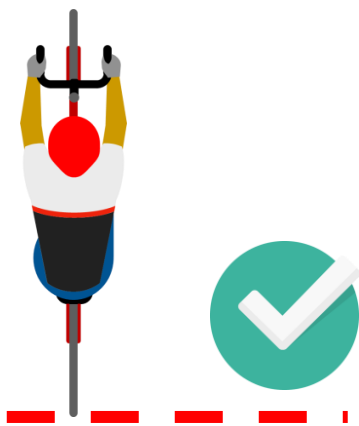
- If you hear this, be on the look out for potholes, or any dangerous obstacles on the road. It doesn't have to be a hole, but can be debris as well. Maybe a boot, cables, broken glass, a bottle, etc.

- **HUMP!**

- Get ready to ride on a hump on the road.

# Dos and Don'ts

- **MAINTAIN GAP LESS THAN A WHEEL SIZE BUT DON'T EVER OVERLAP YOUR WHEEL!**
  - Never overlap the rear wheel of the rider in front of you with your own front wheel. Maintain the gap. Make sure your ride smoothly and maintain speed.



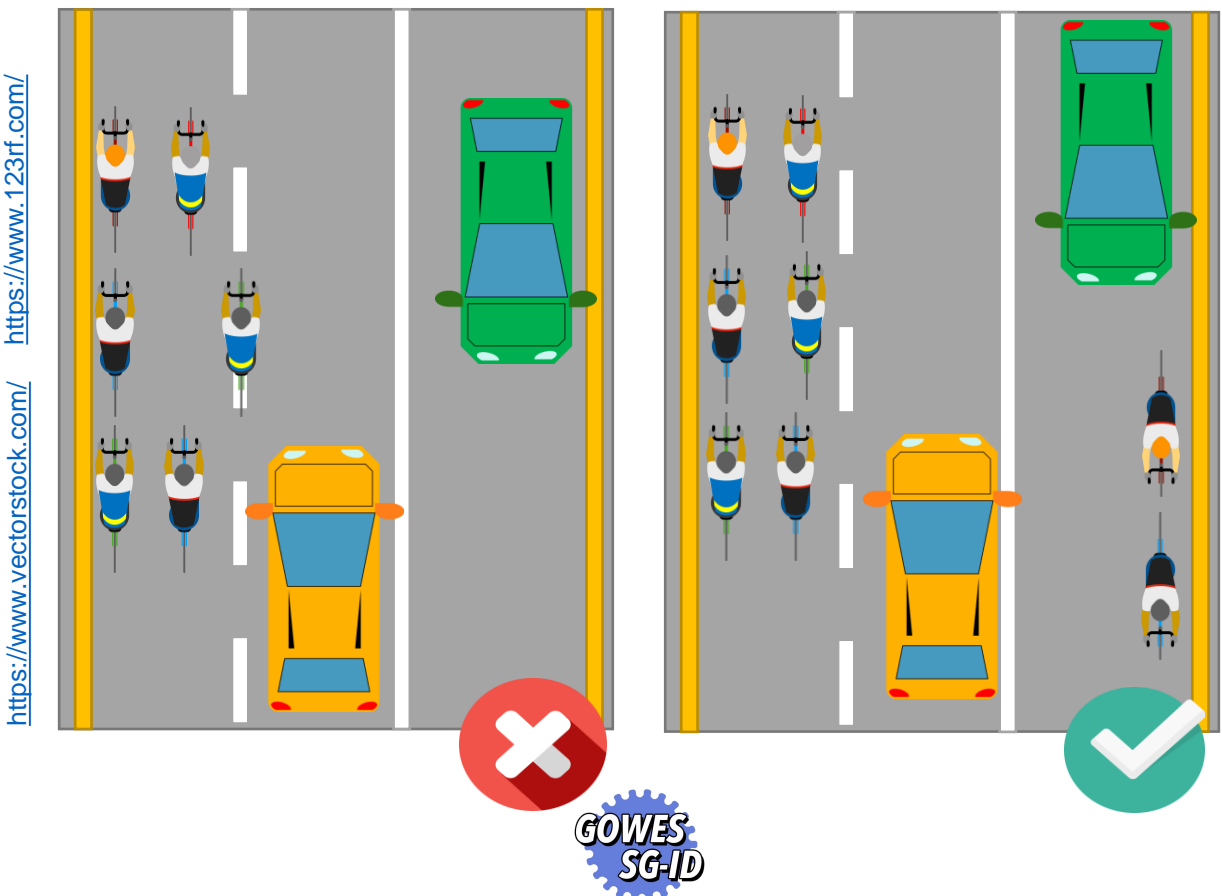
# Dos and Don'ts

- **NO EMERGENCY BRAKE!**

Whatever you do, never brake suddenly. It'll be disastrous for the whole group. If you are not familiar with the group you're riding with, how fast they are, or how they handle, don't ride with them at high speeds, or give more room between you and them than you usually do. You need to have complete trust riding with your group.

- **DO NOT RIDE ON TWO OR MORE ROAD LANES!**

Ride on the lane that your group rides! Don't enter another lane! This will confuse motorists behind you and will block their way. Stay with the group.





# Dos and Don'ts

- If you find yourself to be leading the pack as a puller, don't surge. In other words, accelerate and decelerate slowly so that the pack can keep up with the changes in speed.

## Hand signals

- If you are the puller and would like to drop back so that others can pull instead, give the 'chicken wing' signal.

**PULL  
THROUGH**



**Elbows out and  
flap like chicken  
wings**

<https://blog.mapmyrun.com/>

# Hand signals

**APPROACHING  
A HAZARD**



**OUT!**

**POTHOLE**



**HOLE!**

**DEBRIS**



**HUMP!**

# Hand signals

**LEFT TURN**



**TURN LEFT!**

**RIGHT TURN**



**TURN RIGHT!**

**SLOWING**



**LIGHTS!  
SLOWDOWN!**



# Closing

If you cant remember all of it, just remember to do these 5 golden rules in a ride:

- Follow the group.
- Echo the instructions.
- No overlap.
- No sudden brake.
- Always follow traffic rules.

Don't worry, as long as you can remember to do the 5 things above on our ride, you'll be in good hands!

# Closing

We hope you enjoy your stay in Singapore!

Remember to always follow the traffic rules and signs to be safe, and make sure you have all your gears ready. It is ILLEGAL to not have your basic gears while riding in Singapore (helmet, white front light, red rear light/reflector).

Follow our IG account [@gowessgid](#) for more info on our activities and rides!

RIDE SAFE!

